

SJSU Academic Standing Rates

Data from SJSU Registrar

Complied by Camille Johnson

Figure 1.

Totals for DQ and Probation across semesters. Higher numbers in fall semesters would be expected for probations, as new students matriculate, and higher numbers in spring semesters would be expected as students fail to be reinstated.

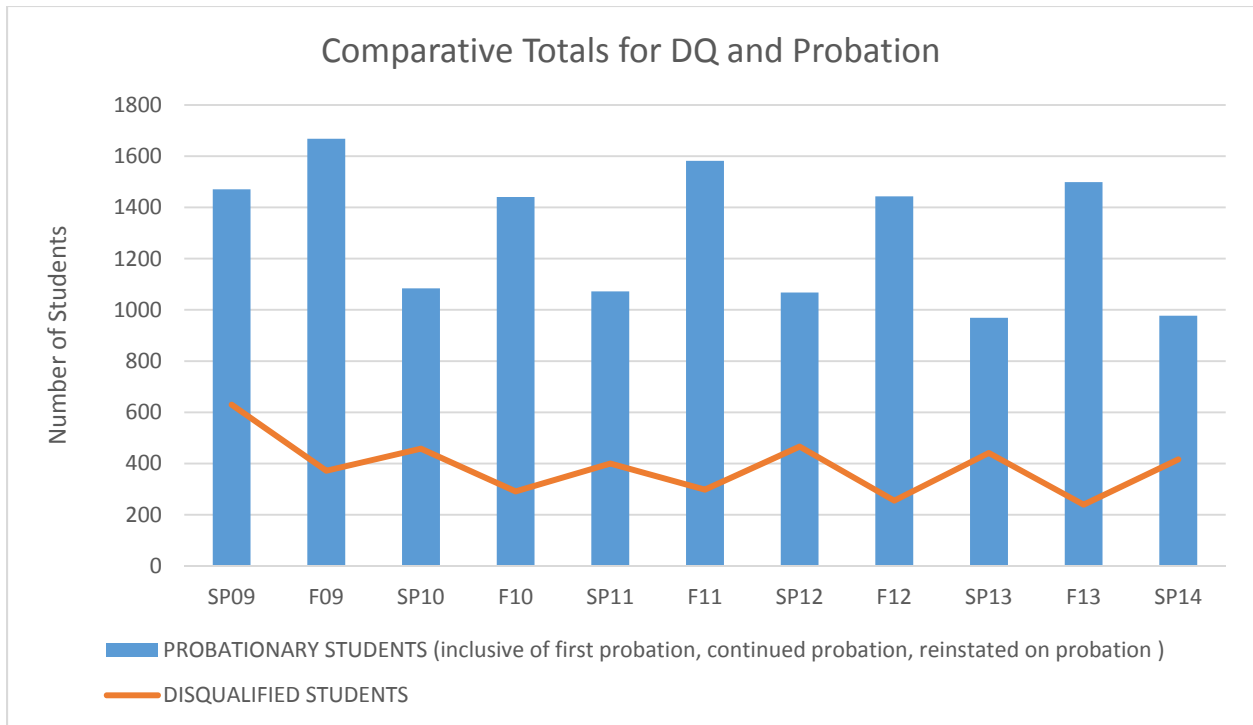
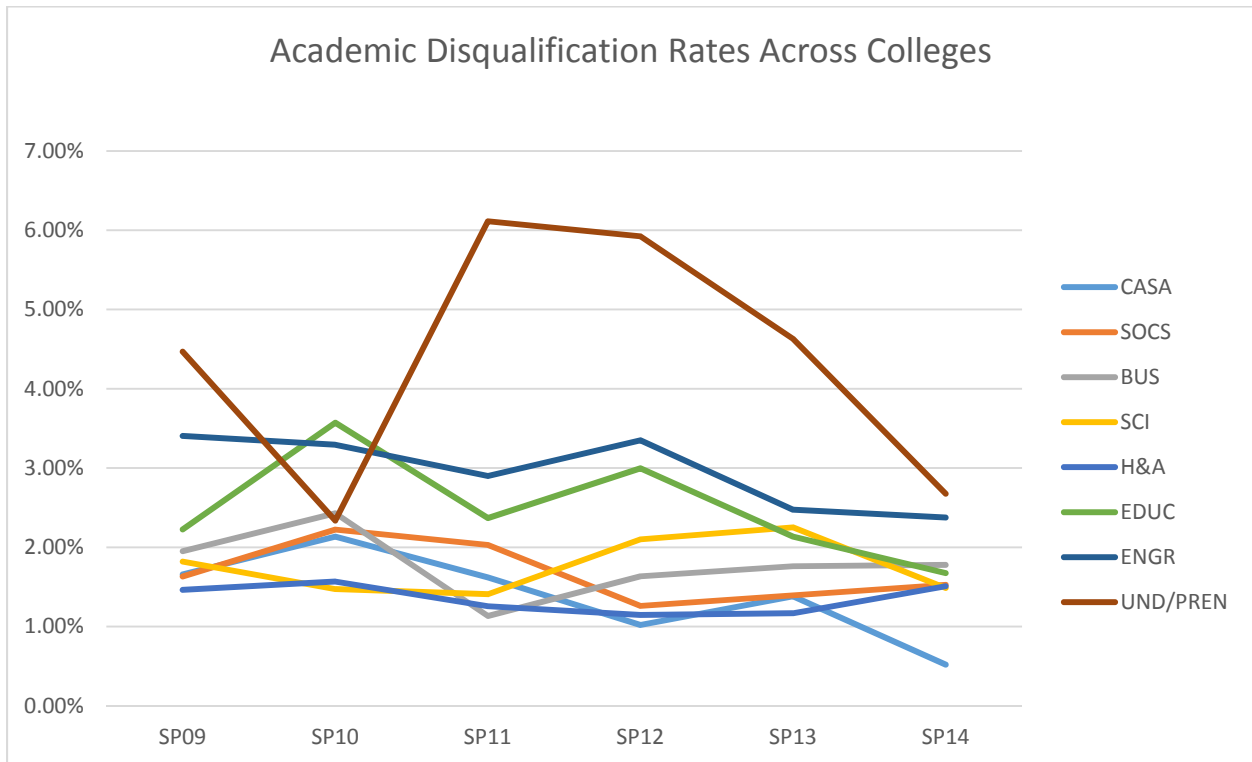


Figure 2.

Overall, percentages of students facing disqualification from their majors has decreased. The graph shows a pattern of more DQs in the spring, as opposed to the fall semester. Colleges using interventions such as Science 90T appear to have greater declines in DQs than other Colleges, although each college has unique student preparation challenges. For example, the entering class for the College of Engineering was doubled in Fall 2013, resulting in less-qualified students entering the program.



	SP09	SP10	SP11	SP12	SP13	SP14
CASA	1.66%	2.13%	1.62%	1.02%	1.38%	0.52%
SOCS	1.63%	2.22%	2.03%	1.26%	1.39%	1.53%
BUS	1.95%	2.43%	1.13%	1.63%	1.76%	1.78%
SCI	1.82%	1.47%	1.41%	2.10%	2.25%	1.49%
H&A	1.46%	1.57%	1.26%	1.15%	1.17%	1.51%
EDUC	2.23%	3.57%	2.37%	3.00%	2.13%	1.68%
ENGR	3.40%	3.29%	2.90%	3.35%	2.47%	2.38%
UND/PREN	4.47%	2.34%	6.11%	5.92%	4.63%	2.68%