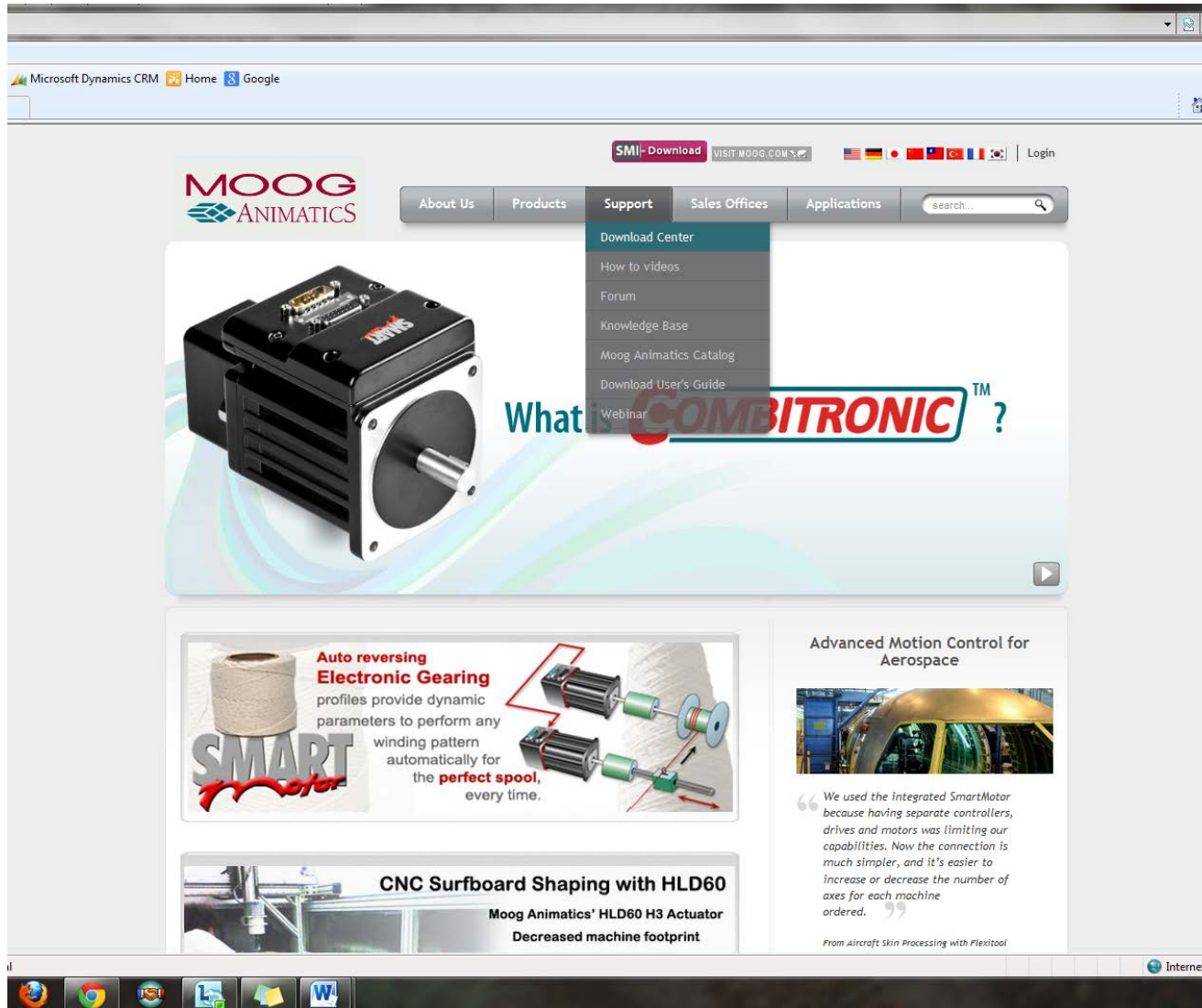


Windows 7 SmartMotor Driver Install Tutorial

Go to <http://www.animatics.com>

Mouse-over the Support button and from the drop down menu, click Download Center



The screenshot shows the Moog Animatics website interface. At the top, there is a navigation bar with the Moog Animatics logo on the left and a menu with items: About Us, Products, Support, Sales Offices, and Applications. A search bar is located to the right of the menu. The 'Support' menu item is highlighted, and a dropdown menu is visible with the following options: Download Center, How to videos, Forum, Knowledge Base, Moog Animatics Catalog, Download User's Guide, and Webinar. The 'Download Center' option is highlighted in blue. Below the navigation bar, there is a large banner image of a SmartMotor with the text 'What COMBITRONIC™?' overlaid. Below the banner, there are three main content areas: 1. 'Auto reversing Electronic Gearing' featuring a spool of wire and a diagram of a motor and gears, with the text 'SMART motor' and 'profiles provide dynamic parameters to perform any winding pattern automatically for the perfect spool, every time.' 2. 'CNC Surfboard Shaping with HLD60' featuring an image of a CNC machine and the text 'Moog Animatics' HLD60 H3 Actuator' and 'Decreased machine footprint'. 3. 'Advanced Motion Control for Aerospace' featuring an image of an aircraft fuselage and a quote: 'We used the integrated SmartMotor because having separate controllers, drives and motors was limiting our capabilities. Now the connection is much simpler, and it's easier to increase or decrease the number of axes for each machine ordered.' Below the quote is the text 'From Aircraft Skin Processing with Flexitool'. At the bottom of the page, there is a Windows 7 taskbar with icons for Internet Explorer, Google Chrome, and other applications.

Windows 7 SmartMotor Driver Install Tutorial

Click on the folder USB232485 Driver

The screenshot shows a web browser window displaying the Moog Animatics website. The browser's address bar shows the URL: `file&id=104&Itemid=9&dir=JSROOT%2Ftop-level/USB232485+Driver`. The website header includes the Moog Animatics logo, navigation tabs for 'About Us', 'Products', 'Support', 'Sales Offices', and 'Applications', and a search bar. The 'Support' tab is active, and the breadcrumb trail reads 'Support > Download Center'. The 'Download Center' section has tabs for 'Firmware/Sample Programs/Software/User's Guide', 'SmartMotor', 'Actuator', 'Product Information Center', and 'Certifications of Conformance'. The 'Firmware/Sample Programs/Software/User's Guide Downloads' section contains a list of firmware information. Below this, a file list is displayed with a filter field. The file list includes folders for 'Fieldbus Option', 'Firmware', 'Sample Programs for SmartMotor', 'SmartMotor Developer Worksheet', 'Software', 'USB232485 Driver' (highlighted in yellow), and 'User's Guide'. The browser's taskbar at the bottom shows icons for Chrome, Internet Explorer, and other applications.

oft Dynamics CRM Home Google

SMI- Download VISIT MOOG.COM

MOOG ANIMATICS

About Us Products Support Sales Offices Applications search...

Support > Download Center

Download Center

Firmware/Sample Programs/Software/User's Guide SmartMotor Actuator Product Information Center Certifications of Conformance

SmartMotor Firmware/Sample Programs/Software/User's Guide Downloads

Firmware:

- D Style and M Style refer to the connection type.
- Firmware for the standard version uses the same firmware for CANopen.
- Profibus is hardware specific, and therefore, do not attempt to install Profibus firmware onto non-Profibus motor.
- Hardware used in CANopen and Devicenet is the same, and therefore, protocol preference is by the firmware selection.

Current folder: top level

Filter file list:

File name
Fieldbus Option
Firmware
Sample Programs for SmartMotor
SmartMotor Developer Worksheet
Software
USB232485 Driver
User's Guide

Internet | P

MOOG ANIMATICS

Windows 7 SmartMotor Driver Install Tutorial

Click on

CP210x_VCP_Win_XP_S2K3_Vista_7.exe

Download the file and save to your computer.

Double click on "CP210x_VCP_Win_XP_S2K3_Vista_7.exe (list item)" in "Program Manager"

Left click on "Next > (push button)" in "Silicon Laboratories CP210x VCP Drivers for Windows XP/2003 Server/Vista/7 - InstallShield Wizard"

Left click on "I accept the terms of the license agreement (radio button)" in "Silicon Laboratories CP210x VCP Drivers for Windows XP/2003 Server/Vista/7 - InstallShield Wizard"

Left click on "Next > (push button)" in "Silicon Laboratories CP210x VCP Drivers for Windows XP/2003 Server/Vista/7 - InstallShield Wizard"

Left click on "Next > (push button)" in "Silicon Laboratories CP210x VCP Drivers for Windows XP/2003 Server/Vista/7 - InstallShield Wizard"

Left click on "Install (push button)" in "Silicon Laboratories CP210x VCP Drivers for Windows XP/2003 Server/Vista/7 - InstallShield Wizard"

Left click on "Finish (push button)" in "Silicon Laboratories CP210x VCP Drivers for Windows XP/2003 Server/Vista/7 - InstallShield Wizard"

Left click on "Install (push button)" in "Silicon Laboratories CP210x USB to UART Bridge Driver Installer"

Left click on "OK (push button)" in "Success"

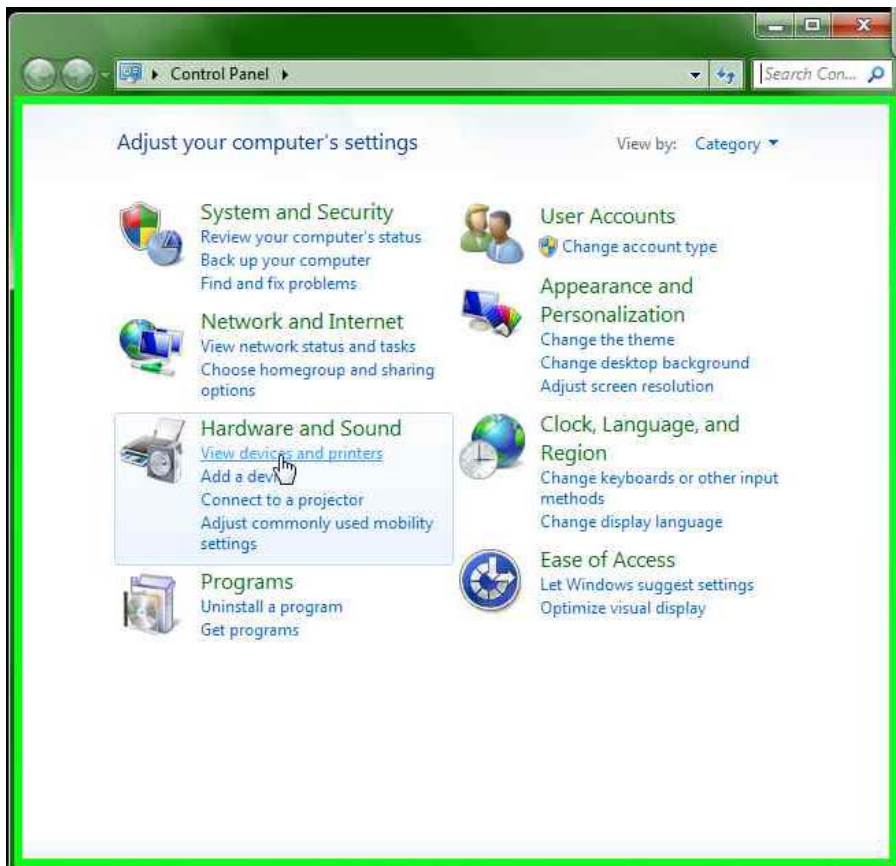
Windows 7 SmartMotor Driver Install Tutorial

Plug in your USB232485 adapter

Left click on "Start (push button)" in "Start"

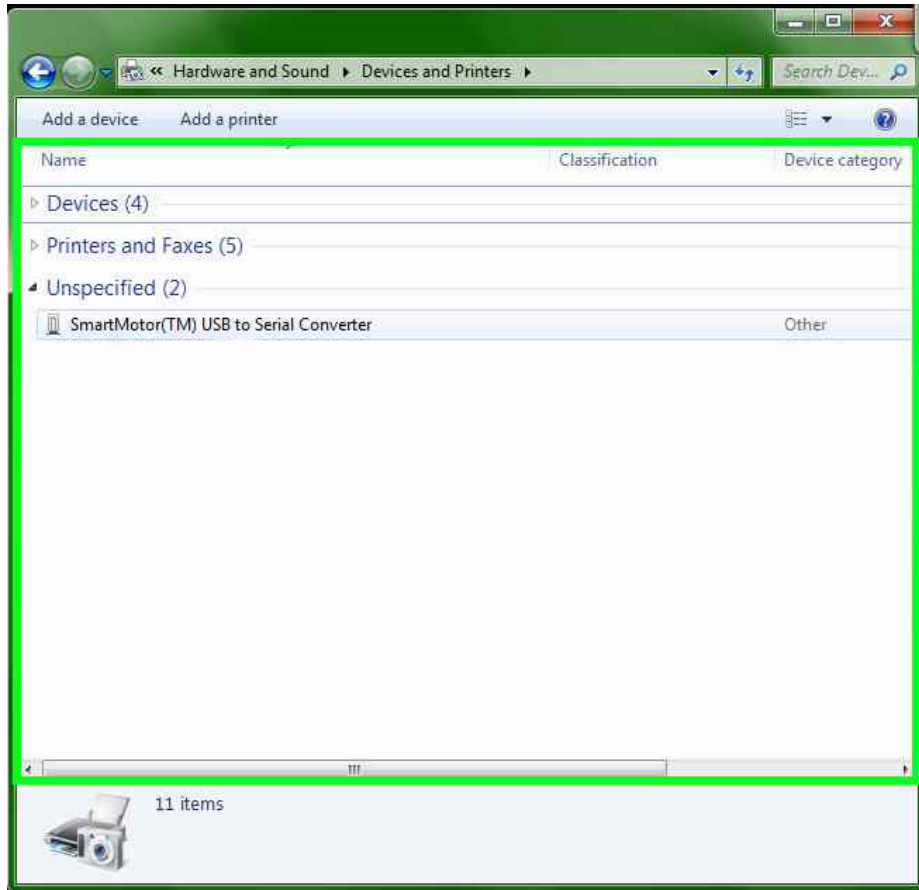
Left click on "Control Panel (menu item)" in "Start menu"

Left click on "View devices and printers (link)" in "Control Panel"



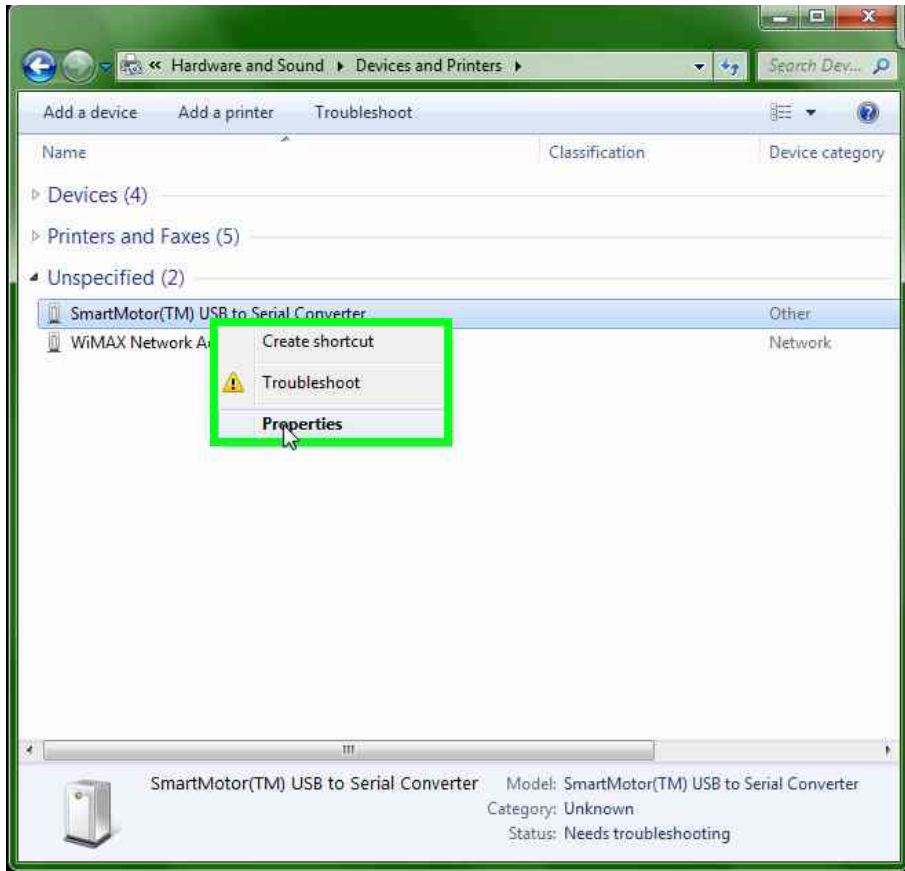
Windows 7 SmartMotor Driver Install Tutorial

Right click on "Name (editable text)" in "Devices and Printers"



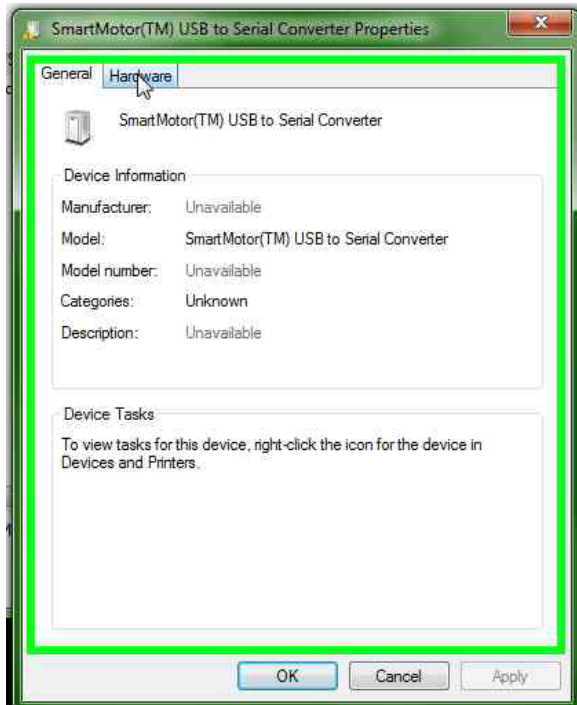
Windows 7 SmartMotor Driver Install Tutorial

Left click on "Properties (menu item)"



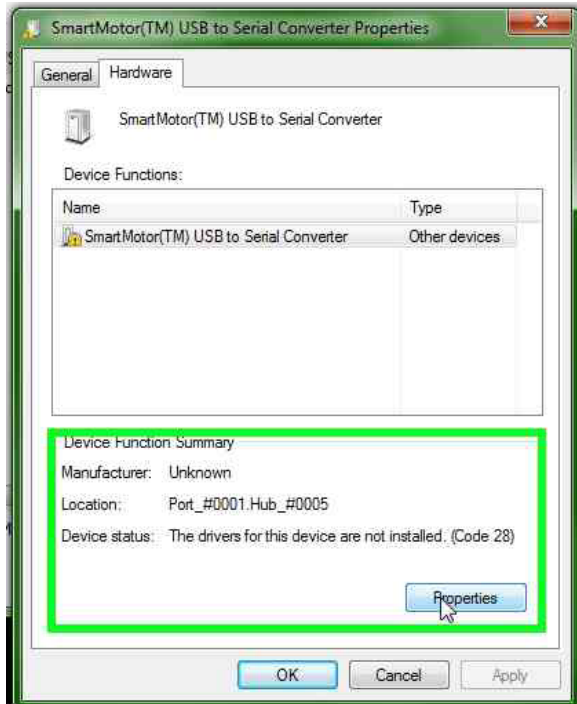
Windows 7 SmartMotor Driver Install Tutorial

Left click on "Hardware (page tab)" in "SmartMotor(TM) USB to Serial Converter Properties"



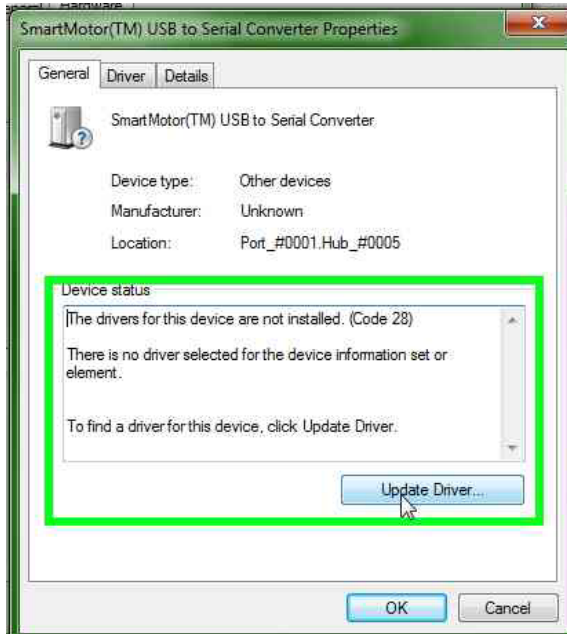
Windows 7 SmartMotor Driver Install Tutorial

Left click on "Properties (push button)" in "SmartMotor(TM) USB to Serial Converter Properties"



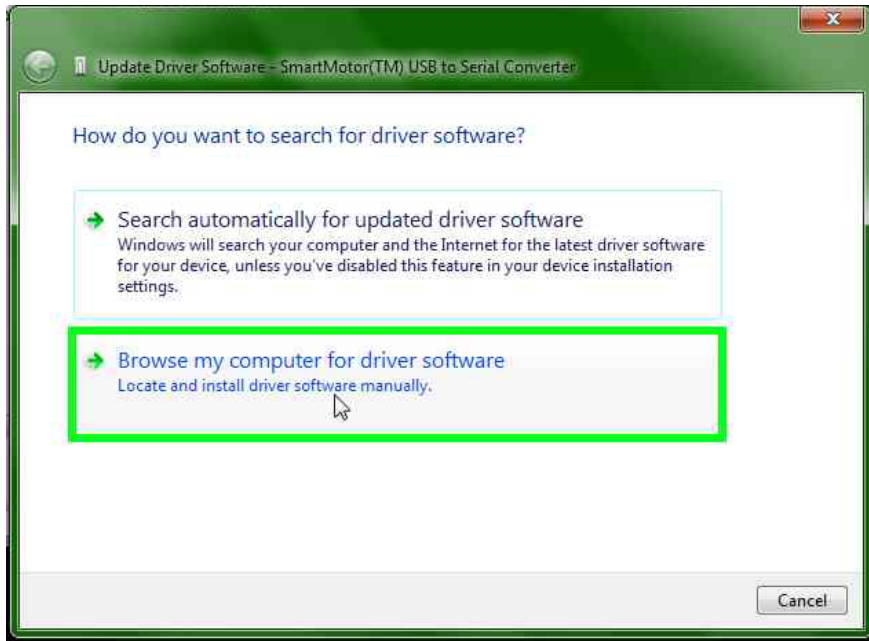
Windows 7 SmartMotor Driver Install Tutorial

Left click on "Update Driver... (push button)" in "SmartMotor(TM) USB to Serial Converter Properties"



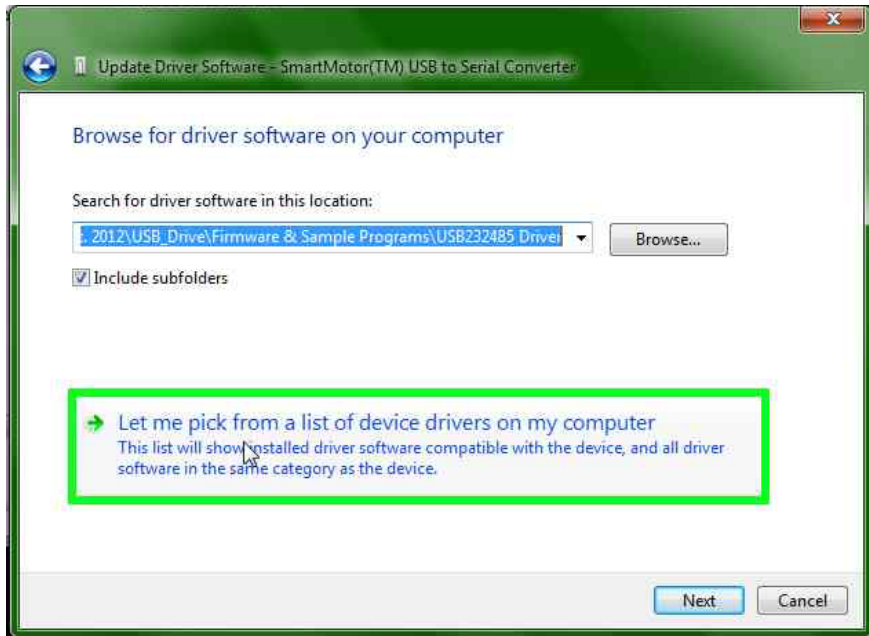
Windows 7 SmartMotor Driver Install Tutorial

Left click on "Browse my computer for driver software (push button)" in "Update Driver Software - SmartMotor(TM) USB to Serial Converter"



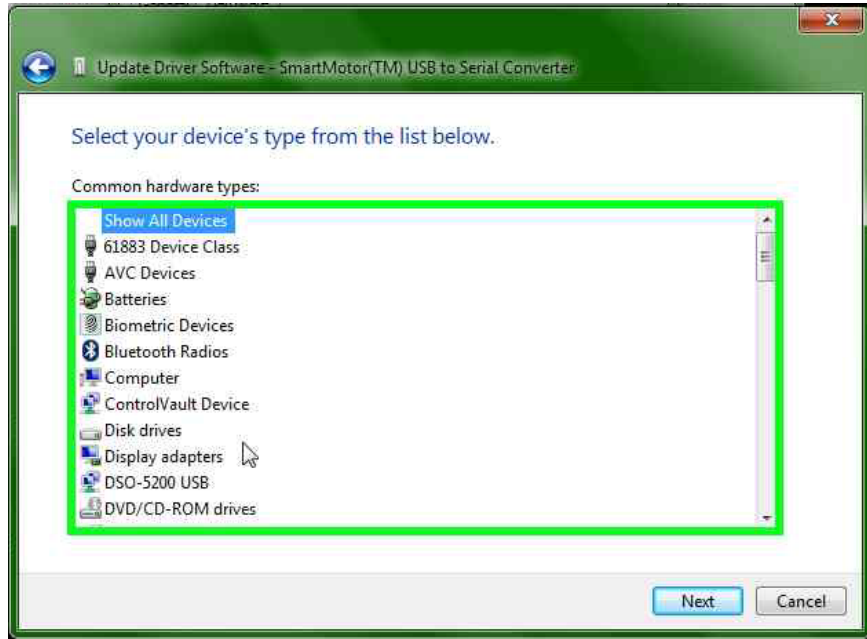
Windows 7 SmartMotor Driver Install Tutorial

Left click on "Let me pick from a list of device drivers on my computer (push button)" in "Update Driver Software - SmartMotor(TM) USB to Serial Converter"



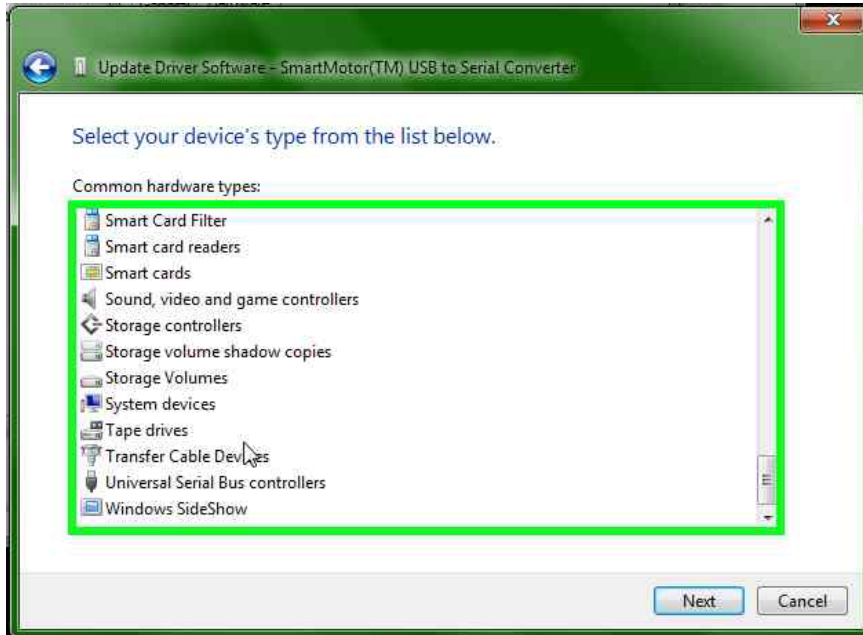
Windows 7 SmartMotor Driver Install Tutorial

Mouse wheel down on "Disk drives (list item)" in "Update Driver Software - SmartMotor(TM) USB to Serial Converter"



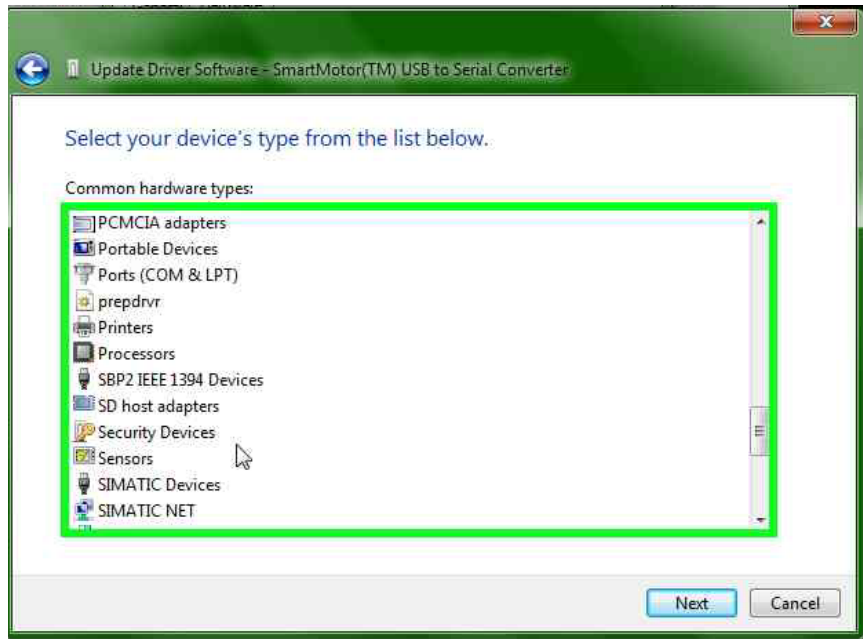
Windows 7 SmartMotor Driver Install Tutorial

Mouse wheel up on "Tape drives (list item)" in "Update Driver Software - SmartMotor(TM) USB to Serial Converter"



Windows 7 SmartMotor Driver Install Tutorial

Mouse wheel down on "Security Devices (list item)" in "Update Driver Software - SmartMotor(TM) USB to Serial Converter"



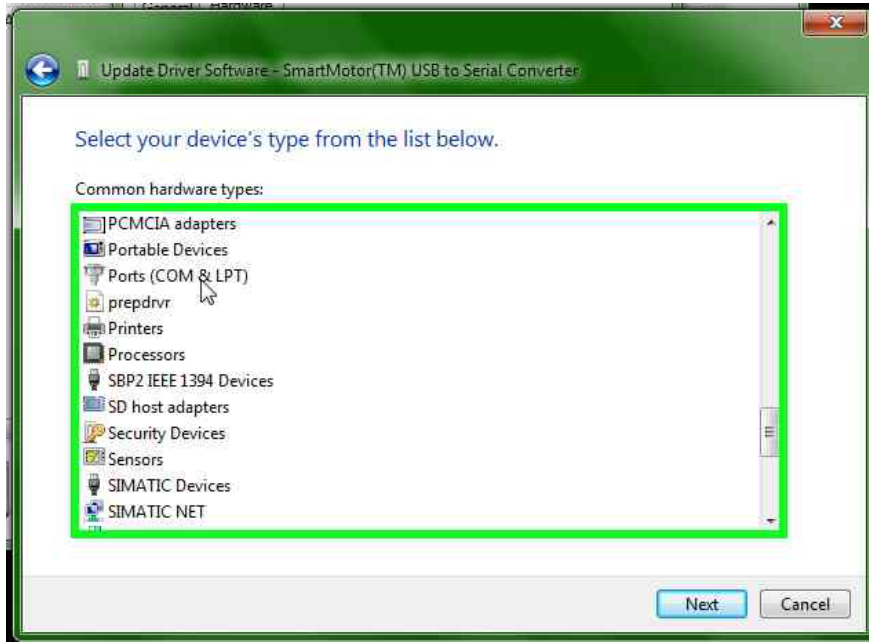
Windows 7 SmartMotor Driver Install Tutorial

Mouse wheel up on "SIMATIC NET (list item)" in "Update Driver Software - SmartMotor(TM) USB to Serial Converter"



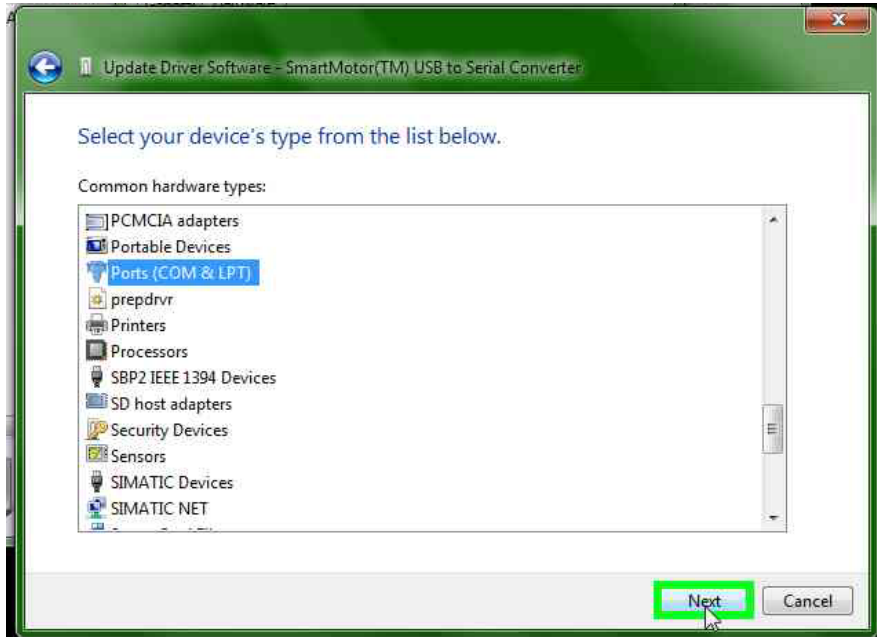
Windows 7 SmartMotor Driver Install Tutorial

Left click on "Ports (COM & LPT) (list item)" in "Update Driver Software - SmartMotor(TM) USB to Serial Converter"



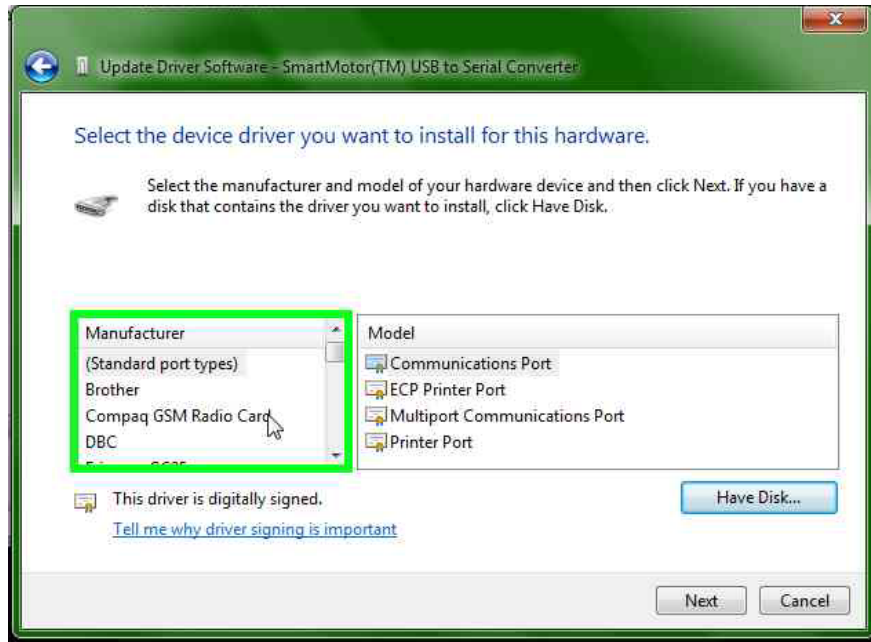
Windows 7 SmartMotor Driver Install Tutorial

Left click on "Next (push button)" in "Update Driver Software - SmartMotor(TM) USB to Serial Converter"



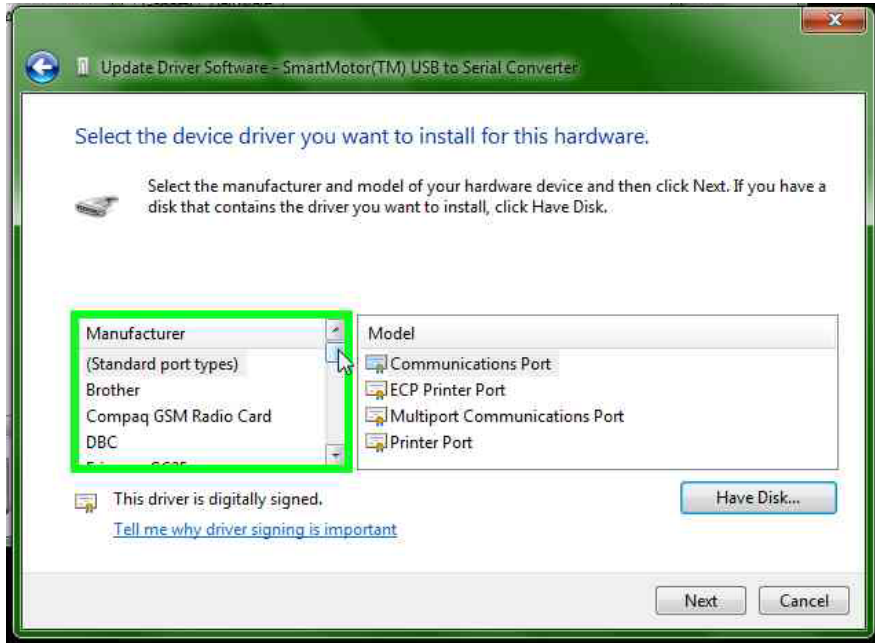
Windows 7 SmartMotor Driver Install Tutorial

Mouse wheel down on "Compaq GSM Radio Card (list item)" in "Update Driver Software - SmartMotor(TM) USB to Serial Converter"



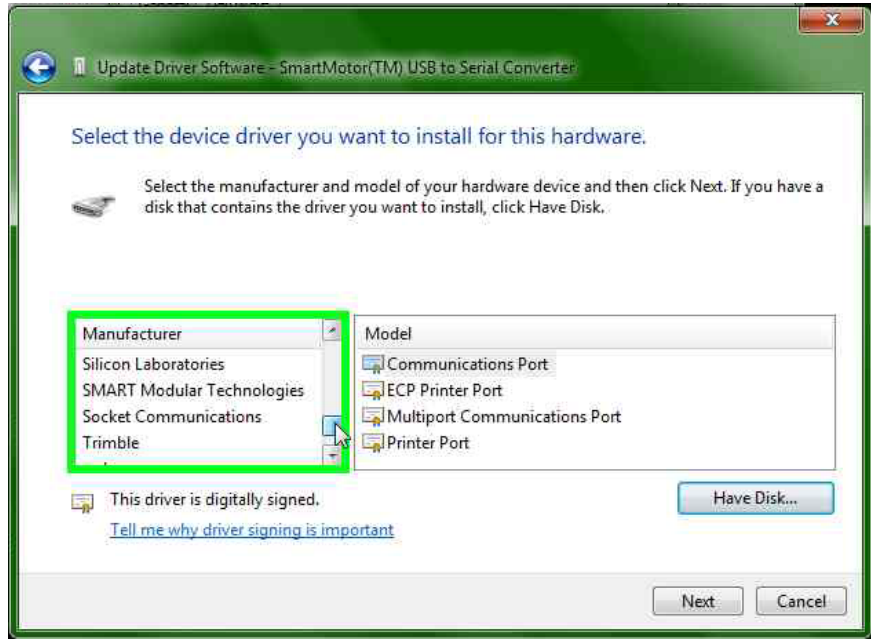
Windows 7 SmartMotor Driver Install Tutorial

Mouse drag start on "Position (indicator)" in "Update Driver Software - SmartMotor(TM) USB to Serial Converter"



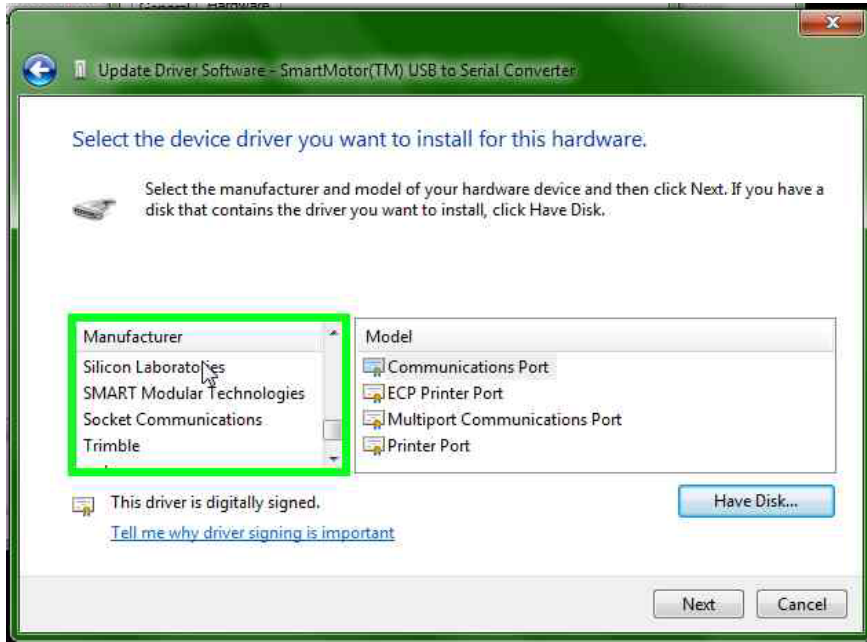
Windows 7 SmartMotor Driver Install Tutorial

Mouse drag end on "Position (indicator)" in "Update Driver Software - SmartMotor(TM) USB to Serial Converter"



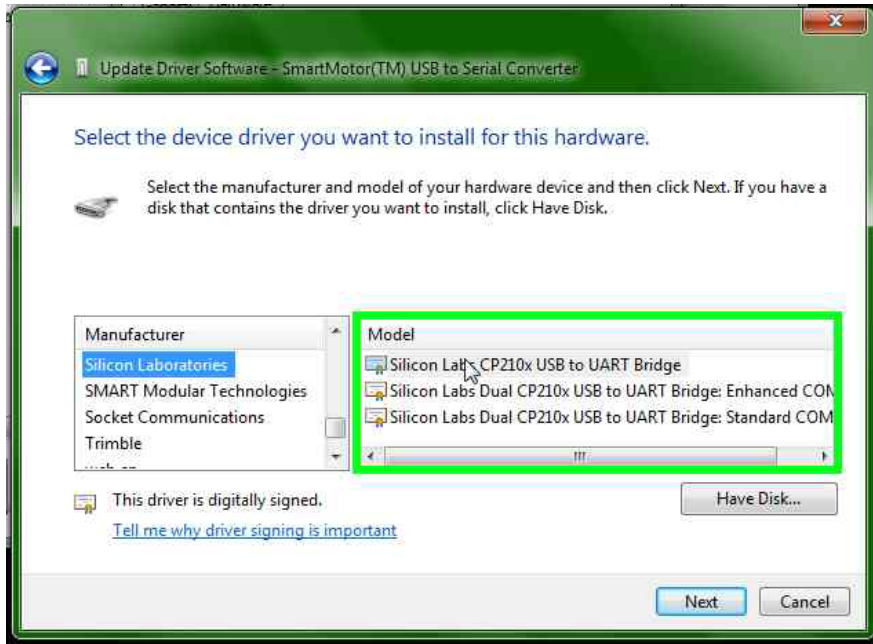
Windows 7 SmartMotor Driver Install Tutorial

Left click on "Silicon Laboratories (list item)" in "Update Driver Software - SmartMotor(TM) USB to Serial Converter"



Windows 7 SmartMotor Driver Install Tutorial

Left click on "Silicon Labs CP210x USB to UART Bridge (list item)" in "Update Driver Software - SmartMotor(TM) USB to Serial Converter"



Windows 7 SmartMotor Driver Install Tutorial

Left click on "Next (push button)" in "Update Driver Software - SmartMotor(TM) USB to Serial Converter"



Windows 7 SmartMotor Driver Install Tutorial

Left click on "Yes (push button)" in "Update Driver Warning"

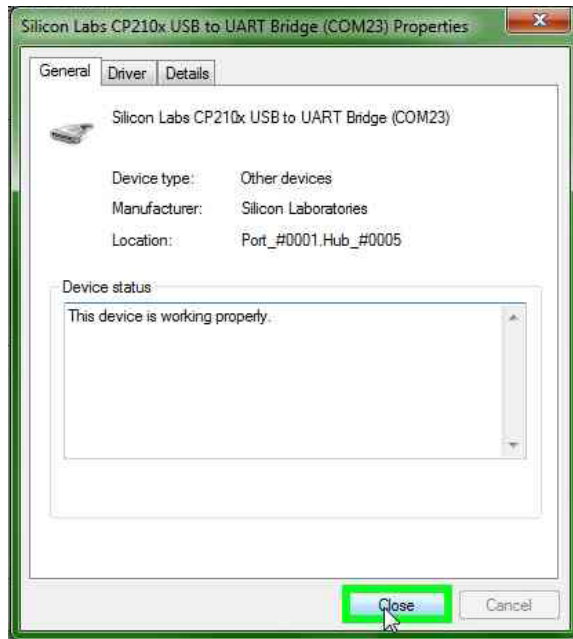


Left click on "Close (push button)" in "Update Driver Software - Silicon Labs CP210x USB to UART Bridge (COM23)"



Windows 7 SmartMotor Driver Install Tutorial

Left click on "Close (push button)" in "Silicon Labs CP210x USB to UART Bridge (COM23) Properties"



Windows 7 SmartMotor Driver Install Tutorial

Left click on "OK (push button)" in "SmartMotor(TM) USB to Serial Converter Properties"

