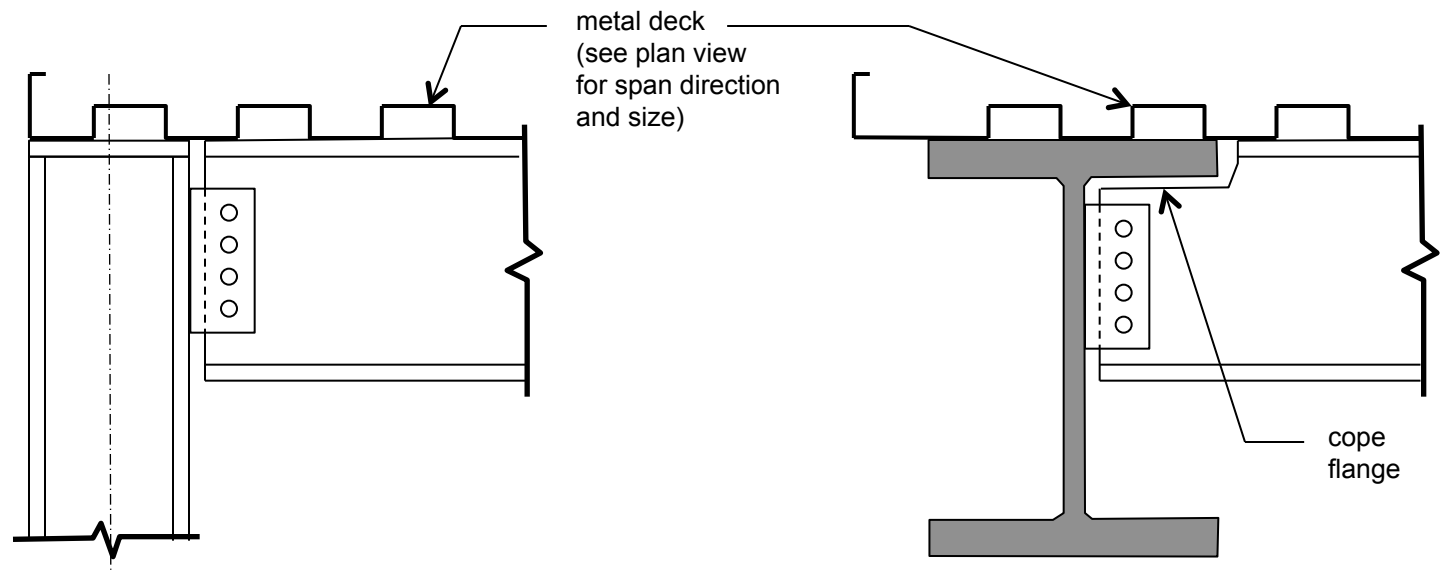


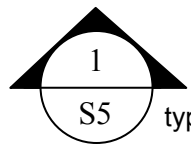
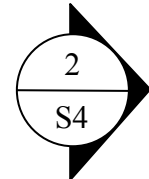
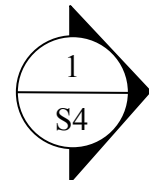
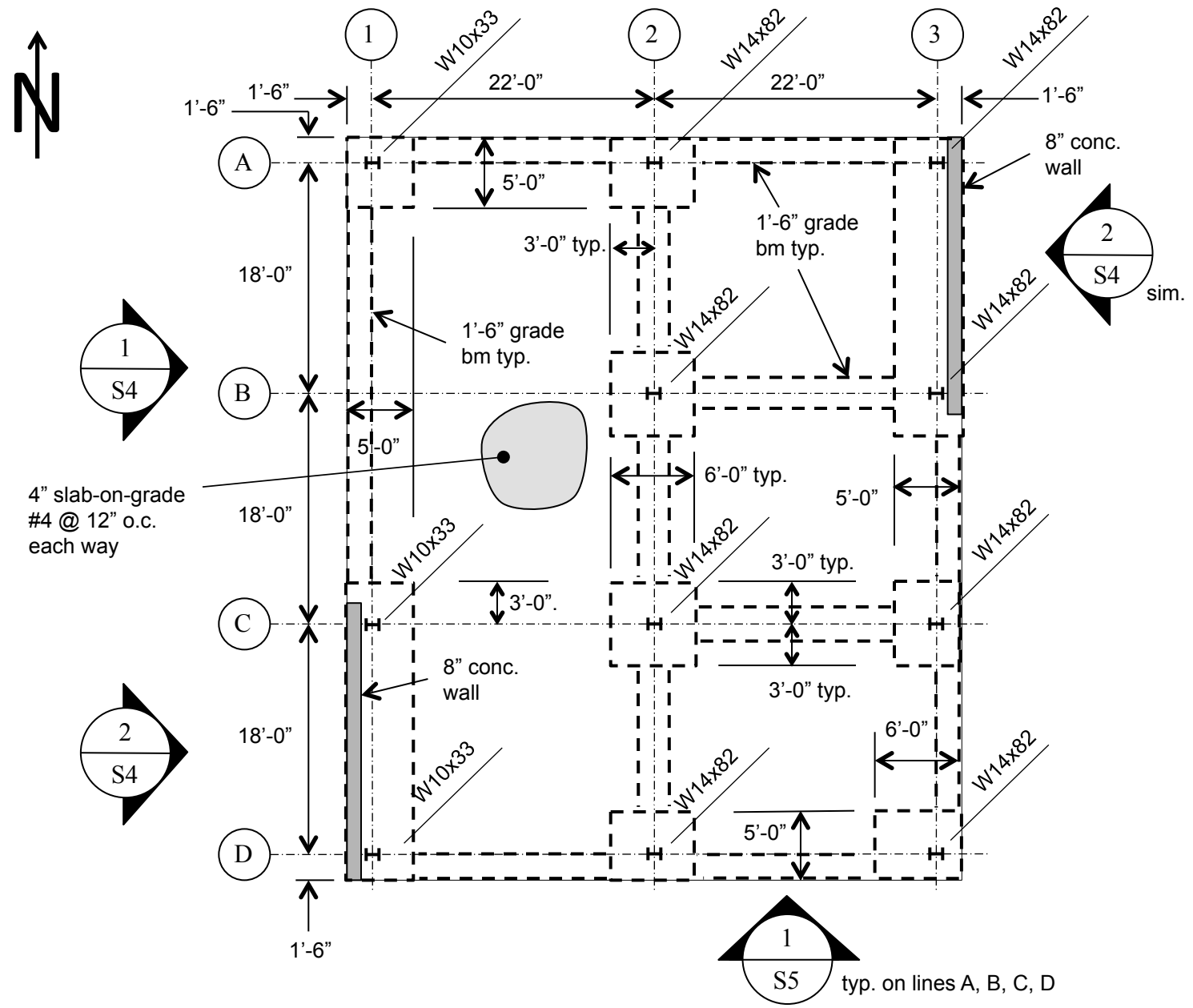
1
S1

Typical Base Plate Connection



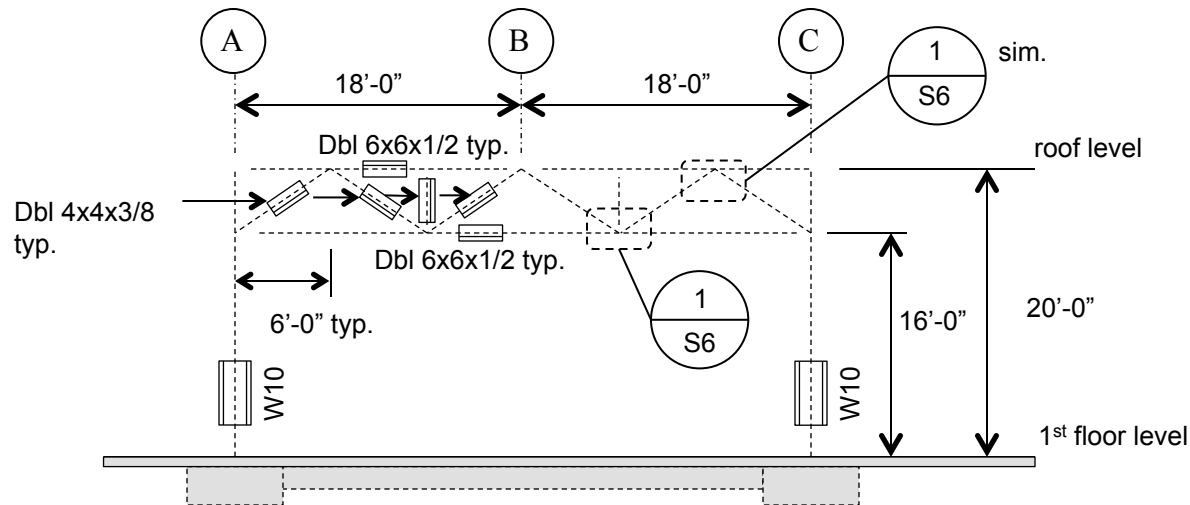
2
S1

Typical Simple Beam Connections

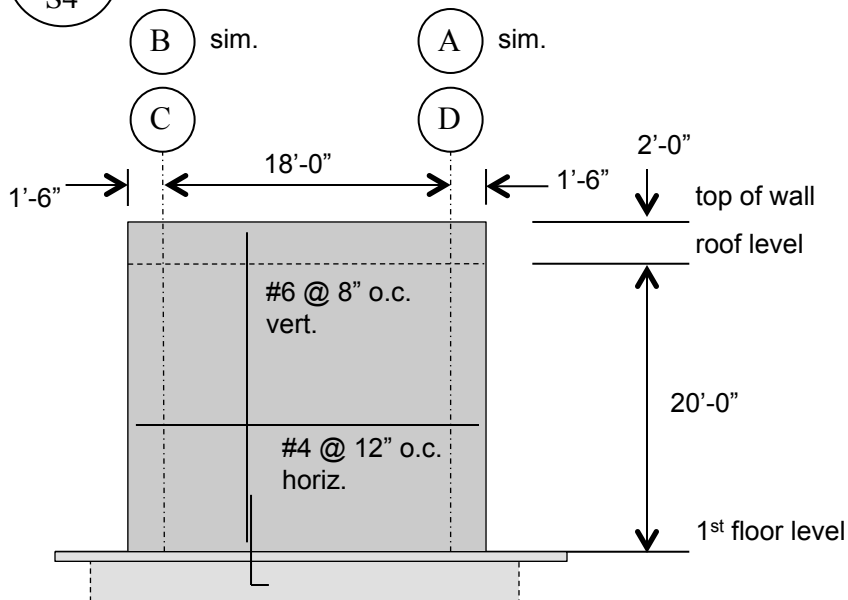


4" slab-on-grade
#4 @ 12" o.c.
each way

typ. on lines A, B, C, D



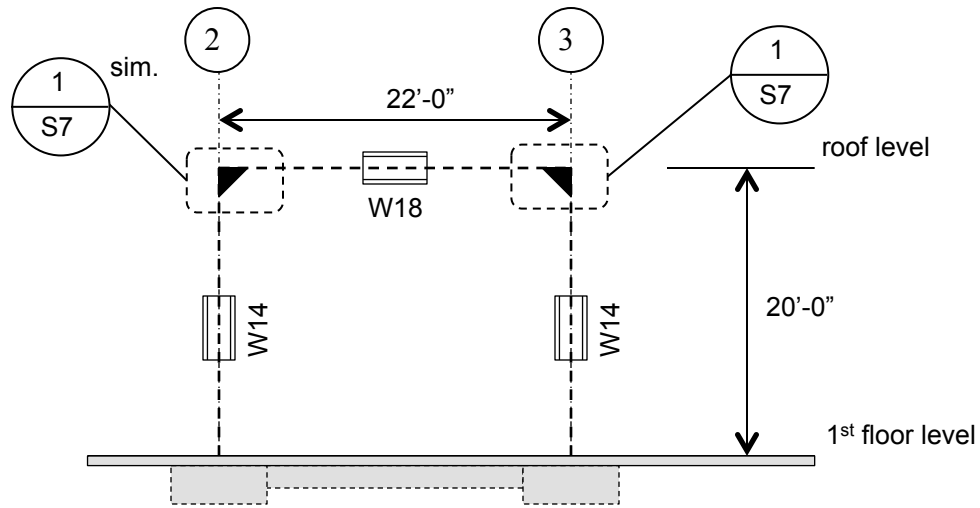
1 Truss Elevation



2 Wall Elevation on Line 1 (Line 3 sim.)

Elevations

S4

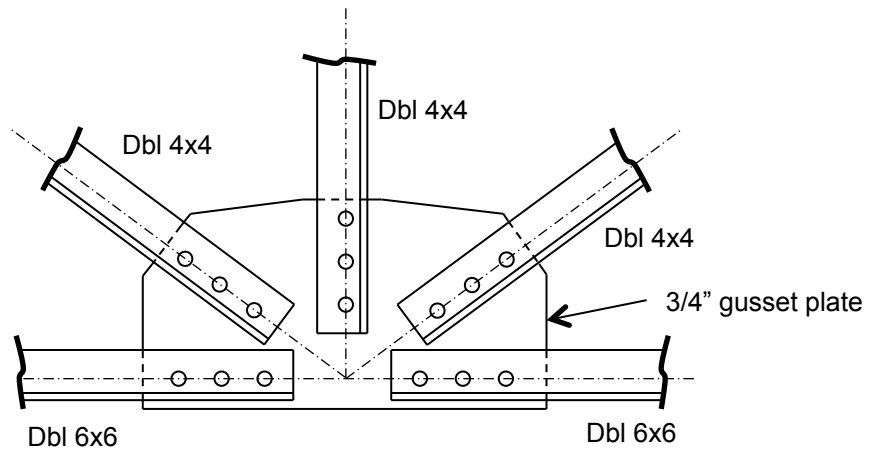


1
S5

Moment Frame Elevation on Lines A, B, C, D

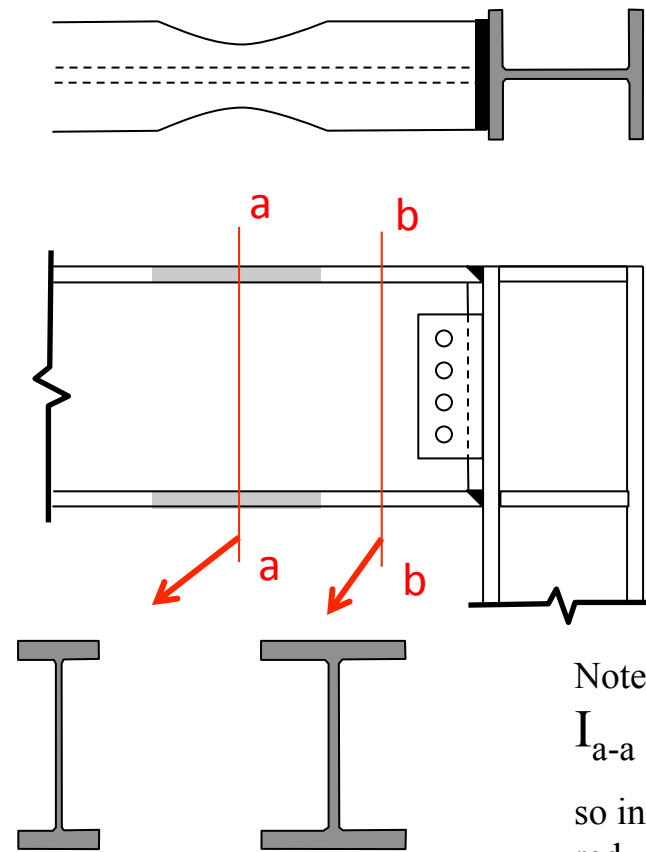
Elevations

S5



1
S6

Truss Connection Detail



Note That

$$I_{a-a} < I_{b-b}$$

so inelastic behavior occurs at the reduced cross section

This is a Reduced Beam Section (RBS) moment connection often called a “Dogbone” Moment Connection